

SAVOY HOUSE FAN D LIERS



MASTER FAN D LIER CATALOGUE
2021





Savoy House COLLECTIONS...

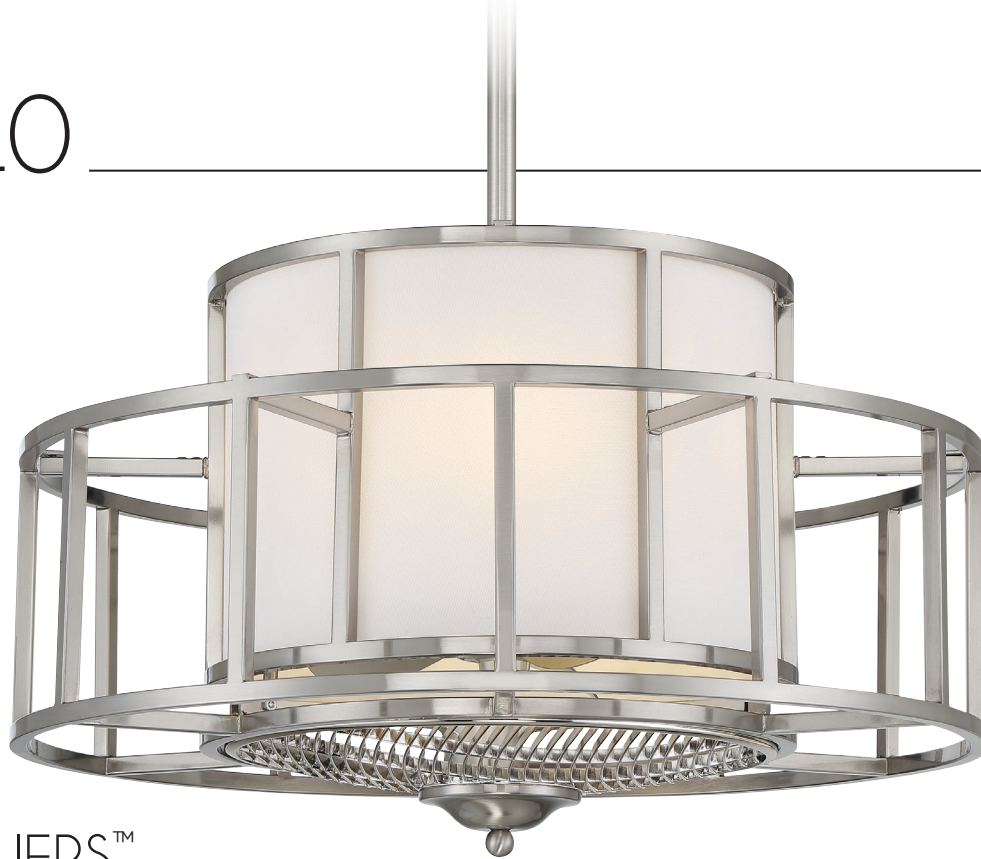
Our exclusive selection of Fan D Liers combine the best of ceiling fans and chandeliers into one fashionable fixture. Fan D Liers are perfect for bringing comfort, style and light to any space, such as living rooms, kitchens, bedrooms, media rooms, wine cellars and home offices. No matter what décor style you prefer, you are sure to find a Fan D Lier that is perfect for you!

Savoy House Lighting is a leader in the lighting industry, proudly featured in premium showrooms and retailers across the United States. Since 1965, we've been known as an affordable luxury brand with stellar customer service. Our commitment to quality engineering and production standards makes us the go-to lighting choice for interior designers, builders and lighting enthusiasts alike. When you choose a Savoy House fixture, you can be certain you've selected a piece that will withstand the test of time.

Though the year 2020 has been uniquely challenging, we remain strong in our commitment to crafting well-made, stylish lighting that delights our customers and we thank you for being a part of our continued growth.



OSLO



FAN D'LIERS™



FAN NUMBER	30-FD-126-322	30-FD-126-SN	30-FD-126-89
MOTOR FINISH	Warm Brass	Satin Nickel	Matte Black
BLADE FINISH	Gold	Silver	Black
FAN LIGHT	Integrated	Integrated	Integrated
SHADE	White	White	White
DOWNROD FINISH	322	SN	FB

- Motor Size 104 x 110
- 12" Blade Span
- 26"W x 15-1/2"H (Cage Only)
- 14° Blade Pitch
- ABS Blades & Integrated Fan Light Included
- Additional Downrod Lengths Sold Separately

- 4 Medium Base 6W LED Dimmable Bulbs Included
- 500 Lumens (per bulb), 3000K, 90 CRI
- Not Hugger Kit Adaptable
- Handheld RMT-AC-Universal Remote with D Receiver included
- Downrods included 4" & 18"



Handheld Remote Control
Included
RMT-AC-UNIVERSAL



ENERGY INFORMATION at High Speed

Airflow	Electricity Use	Airflow Efficiency
870 Cubic Feet Per Minute	30.63 Watts (Excludes Lights)	28.40 Cubic Feet Per Minute Per Watt

Compare: 36" to 48" ceiling fans have airflow efficiencies ranging from approximately 71 to 86 cubic feet per minute per watt at high speed.

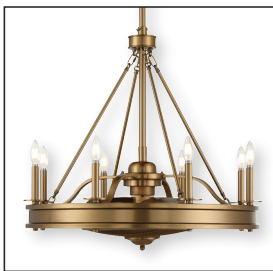




LYON



FAN D'LIERS™



FAN NUMBER	39-FD-124-109	39-FD-124-322	39-FD-124-89
MOTOR FINISH	Polished Nickel	Warm Brass	Matte Black
BLADE FINISH	Silver	Gold	Black
FAN LIGHT	Integrated	Integrated	Integrated
DOWNROD FINISH	109	322	FB

- Motor Size 104 x 113
- 12" Blade Span
- 30"W x 39"H
- 14° Blade Pitch
- Additional Downrod Lengths Sold Separately
- ABS Blades & Integrated Fan Light Included

- 8 Candelabra Base 6W LED Dimmable Bulbs Included
- 300 Lumens (per bulb), 3000K, 90 CRI
- Not Hugger Kit Adaptable
- Handheld RMT-AC-Universal Remote with E Receiver included
- Downrods included 4" & 18"

Handheld Remote Control
Included
RMT-AC-UNIVERSAL



ENERGY INFORMATION at High Speed

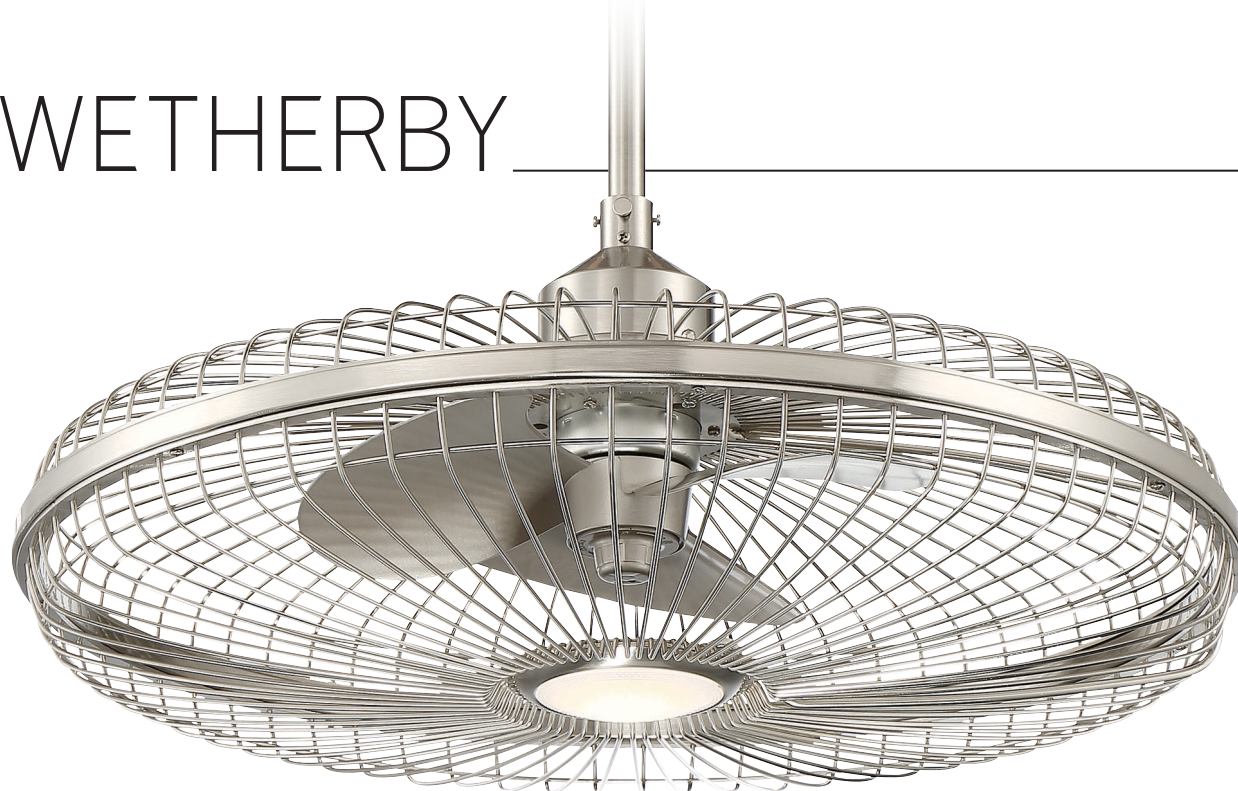
Airflow	Electricity Use	Airflow Efficiency
1,471 Cubic Feet Per Minute	37.43 Watts (Excludes Lights)	39 Cubic Feet Per Minute Per Watt

Compare: 36" to 48" ceiling fans have airflow efficiencies ranging from approximately 71 to 86 cubic feet per minute per watt at high speed.





WETHERBY



FAN D'LIERS™



FAN NUMBER	29-FD-122-SN	29-FD-122-44	29-FD-122-322
MOTOR FINISH	Satin Nickel	Classic Bronze	Warm Brass
BLADE FINISH	Silver	Black	Gold
FAN LIGHT	Integrated	Integrated	Integrated
GLASS	White Etched	White Etched	White Etched
DOWNROD FINISH	SN	13	322

- Motor Size 105 x 113
- 14" Blade Span
- 13° Blade Pitch
- Additional Downrod Lengths Sold Separately
- 10W LED Dimmable (800 Lumens, 3000K, 90 CRI)
- ABS Blades & Integrated Fan Light Included
- Not Hugger Kit Adaptable
- Handheld RMT-AC-Universal Remote with E Receiver Included
- Fan & Blades are **UL Damp Location**
- Downrods included 4" & 18"



Handheld Remote Control
Included
RMT-AC-UNIVERSAL



ENERGY INFORMATION at High Speed

Airflow 1,471 Cubic Feet Per Minute	Electricity Use 37.43 Watts (Excludes Lights)	Airflow Efficiency 39.31 Cubic Feet Per Minute Per Watt
--	--	--

Compare: 36" to 48" ceiling fans have airflow efficiencies ranging from approximately 71 to 86 cubic feet per minute per watt at high speed.





STOCKHOLM



FAN D'LIERS™



FAN NUMBER	39-FD-125-54	39-FD-125-53
MOTOR FINISH	Gold Patina	Silver Patina
BLADE FINISH	Gold	Silver
FAN LIGHT	Integrated	Integrated
DOWNROD FINISH	54	53

- Motor Size 104 x 113
- 14" Blade Span
- 31"W x 12"H (Cage Only)
- 14° Blade Pitch
- Additional Downrod Lengths Sold Separately

- ABS Blades & Integrated Fan Light Included
- 6 Candelabra Base 6W LED Dimmable Bulbs Included
- 300 Lumens (per bulb), 3000K, 90 CRI
- Not Hugger Kit Adaptable
- Handheld RMT-AC-Universal Remote with E Receiver included
- Downrods included 4" & 18"



Handheld Remote Control
Included
RMT-AC-UNIVERSAL



ENERGY INFORMATION at High Speed

Airflow 1,471 Cubic Feet Per Minute	Electricity Use 37.43 Watts (Excludes Lights)	Airflow Efficiency 39 Cubic Feet Per Minute Per Watt
--	--	---

Compare: 36" to 48" ceiling fans have airflow efficiencies ranging from approximately 71 to 86 cubic feet per minute per watt at high speed.



STOCKHOLM



COLONADE



FAN D'LIERS™



FAN NUMBER	34-FD-123-155
MOTOR FINISH	Provence w/ Gold Accents
BLADE FINISH	Provence
DOWNROD FINISH	155

- Motor Size 104 x 1143- 14" Blade Span
- 29-1/2"W x 15-1/2"H (Cage Only)
- 14° Blade Pitch
- Additional Downrod Lengths Sold Separately

- ABS Blades & Integrated Fan Light Included
- 6 Medium Base 6W LED Dimmable Bulbs Included
- 600 Lumens (per bulb), 3000K, 90 CRI)
- Not Hugger Kit Adaptable
- Handheld RMT-AC-Universal Remote with E Receiver included
- Downrods included 4" & 18"



Handheld Remote Control
Included
RMT-AC-UNIVERSAL



ENERGY INFORMATION at High Speed

Airflow 1,471 Cubic Feet Per Minute	Electricity Use 37.43 Watts (Excludes Lights)	Airflow Efficiency 39 Cubic Feet Per Minute Per Watt
--	--	---

Compare: 36" to 48" ceiling fans have airflow efficiencies ranging from approximately 71 to 86 cubic feet per minute per watt at high speed.



COLONADE



TAURUS



FAN D'LIERS™



FAN NUMBER	30-333-FD-11
MOTOR FINISH	Polished Chrome
FAN LIGHT	Integrated
GLASS	White Opal
SHADE	Smoked & Clear Crystal
DOWNROD FINISH	11

- 29-1/2"W x 30"H
- Motor Size 104 x 114
- 14° Blade Pitch
- Additional Downrod Lengths Sold Separately
- Not Hugger Kit Adaptable

- 6 Medium Base 6W LED Dimmable Bulbs Included
- 500 Lumens (per bulb), 3000K, 90 CRI
- Handheld RMT-AC-Universal Remote with D Receiver Included
- Downrods included 4" & 18"



Handheld Remote Control
Included
RMT-AC-UNIVERSAL



ENERGY INFORMATION at High Speed

Airflow 2,394 Cubic Feet Per Minute	Electricity Use 38.5 Watts (Excludes Lights)	Airflow Efficiency 62 Cubic Feet Per Minute Per Watt
--	---	---

Compare: 36" to 48" ceiling fans have airflow efficiencies ranging from approximately 71 to 86 cubic feet per minute per watt at high speed.



TAURUS



VIREO



FAN D'LIERS™



FAN NUMBER	26-335-FD-272
MOTOR FINISH	Silver Dust
FAN LIGHT	Integrated
SHADE	Silver Mica
DOWNROD FINISH	272

- 26"W x 30-1/8"H
- Motor Size 104 x 114
- 14" Blade Span
- 14" Blade Pitch
- Additional Downrod Lengths Sold Separately

- Not Hugger Kit Adaptable
- 6 Medium Base 6W LED Dimmable Bulbs Included
- 500 Lumens (per bulb), 3000K, 90 CRI
- Handheld RMT-AC-Universal Remote with E Receiver Included
- Downrods included 4" & 18"



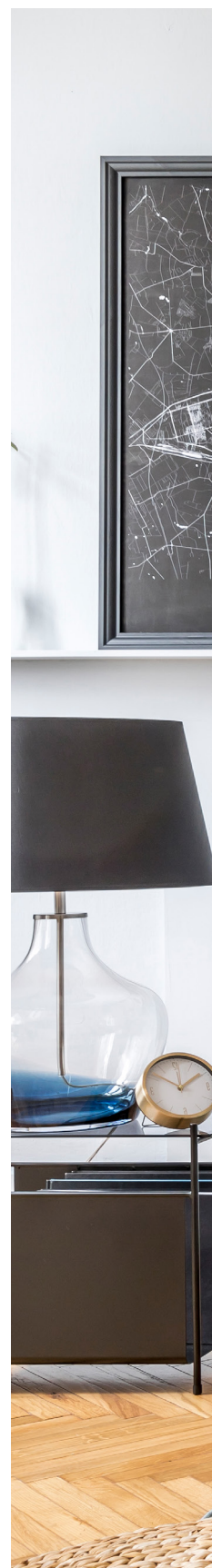
Handheld Remote Control
Included
RMT-AC-UNIVERSAL



ENERGY INFORMATION at High Speed

Airflow 2,394 Cubic Feet Per Minute	Electricity Use 38.5 Watts (Excludes Lights)	Airflow Efficiency 62 Cubic Feet Per Minute Per Watt
--	---	---

Compare: 36" to 48" ceiling fans have airflow efficiencies ranging from approximately 7.1 to 8.6 cubic feet per minute per watt at high speed.





ALSACE



FAN D'LIERS™



FAN NUMBER	26-9536-FD-196
MOTOR FINISH	Reclaimed Wood
BLADE FINISH	Chestnut
FAN LIGHT	Integrated
GLASS	Frosted Opal
DOWNROD FINISH	196

- Motor Size 120 x 25
- 26" Blade Span
- 13.5° Blade Pitch
- 3-Speed Reversible Motor
- Additional Downrod Lengths Sold Separately
- 18W LED Dimmable Bulb Included
- 1400 Lumens, 3000K, 90 CRI
- Not Hugger Kit Adaptable
- Handheld RMT-AC-Universal Remote with D Receiver Included
- Fan & Blades are **UL Damp Location**



Handheld Remote Control
Included
RMT-AC-UNIVERSAL



ENERGY INFORMATION at High Speed

Airflow 2,275.61 Cubic Feet Per Minute	Electricity Use 40.38 Watts (Excludes Lights)	Airflow Efficiency 56.35 Cubic Feet Per Minute Per Watt
---	--	--

Compare: 36" to 48" ceiling fans have airflow efficiencies ranging from approximately 71 to 86 cubic feet per minute per watt at high speed.



ALSACE



KONA



FAN D'LIERS™



FAN NUMBER	26-9472-FD-133
MOTOR FINISH	Sapele
BLADE FINISH	Black
DOWNROD FINISH	FB

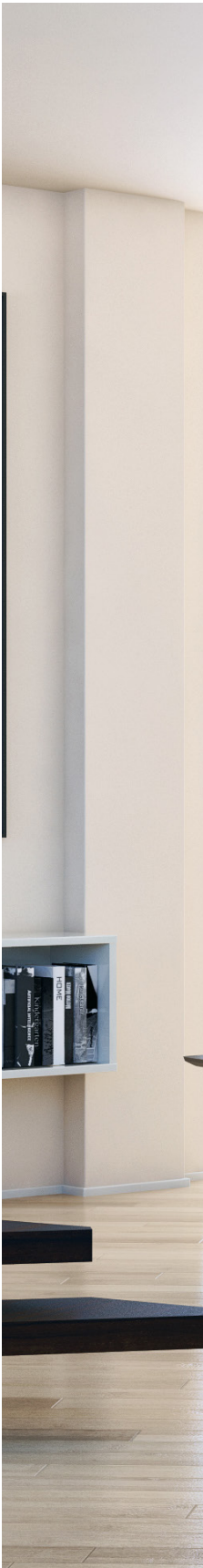
- Motor Size 104 x 114
 - 14" Blade Span
 - 26"W x 9-1/4"H (Cage Only)
 - 14° Blade Pitch
 - Additional Downrod Lengths Sold Separately
- ABS Blades & Integrated Fan Light Included
 - 6W LED Dimmable (3000 Lumens, 3000K, 90 CRI)
 - Not Hugger Kit Adaptable
 - Handheld RMT-AC-Universal Remote with E Receiver included
 - Fan & Blades are **UL Damp Location**
 - Downrods included 4" & 18"



Handheld Remote Control
Included
RMT-AC-UNIVERSAL



ENERGY INFORMATION at High Speed		
Airflow 2,394 Cubic Feet Per Minute	Electricity Use 38.5 Watts (Excludes Lights)	Airflow Efficiency 62.18 Cubic Feet Per Minute Per Watt
Compare: 36" to 48" ceiling fans have airflow efficiencies ranging from approximately 71 to 86 cubic feet per minute per watt at high speed.		





BRISA



FAN D'LIERS™



FAN NUMBER	35-328-FD-13
MOTOR FINISH	English Bronze
FAN LIGHT	Integrated
SHADE	Pale White Fabric
DOWNROD FINISH	13

- 34-3/4"W x 39"H
- Motor Size 104 x 114
- 18" Downrod Included
- Additional Downrod Lengths Sold Separately

- Not Hugger Kit Adaptable
- 8C 4W LED Dimmable Bulbs Included
- 300 Lumens (per bulb), 3000K, 90 CRI
- Handheld RMT-AC-Universal Remote with E Receiver Included



Handheld Remote Control
Included
RMT-AC-UNIVERSAL



ENERGY INFORMATION at High Speed

Airflow	Electricity Use	Airflow Efficiency
2,394 Cubic Feet Per Minute	38.5 Watts (Excludes Lights)	62 Cubic Feet Per Minute Per Watt

Compare: 36" to 48" ceiling fans have airflow efficiencies ranging from approximately 7.1 to 86 cubic feet per minute per watt at high speed.





ETESIAN



FAN D'LIERS™



FAN NUMBER	36-329-FD-21	36-329-FD-SN
MOTOR FINISH	Burnished Russett	Satin Nickel
FAN LIGHT	Integrated	Integrated
GLASS	Clear Outer Cream Inner	Clear Outer White Inner
DOWNROD FINISH	21	SN

- 35-1/2"W x 40"H
- Motor Size 104 x 114
- 20° Blade Pitch
- 18" Downrod Included
- Additional Downrod Lengths Sold Separately

- Not Hugger Kit Adaptable
- 8 Medium Base 6W LED Dimmable Bulbs Included
- 500 Lumens (per bulb), 3000K, 90 CRI
- Handheld RMT-AC-Universal Remote with E Receiver Included



Handheld Remote Control
Included
RMT-AC-UNIVERSAL



ENERGY INFORMATION at High Speed

Airflow	Electricity Use	Airflow Efficiency
1,186 Cubic Feet Per Minute	38.5 Watts (Excludes Lights)	30.8 Cubic Feet Per Minute Per Watt

Compare: 36" to 48" ceiling fans have airflow efficiencies ranging from approximately 7.1 to 8.6 cubic feet per minute per watt at high speed.





BOREA



FAN D'LIERS™



FAN NUMBER	32-326-FD-SN
MOTOR FINISH	Satin Nickel
FAN LIGHT	Integrated
GLASS	White Frosted
DOWNROD FINISH	SN

- 32"W x 38"H
- Motor Size 104 x 114
- 20° Blade Pitch
- 18" Downrod Included
- Additional Downrod Lengths Sold Separately
- Not Hugger Kit Adaptable
- 5 Medium Base 6 LED Dimmable Bulbs Included
- 500 Lumens (per bulb), 3000K, 90 CRI
- Handheld RMT-AC-Universal Remote with D Receiver Included



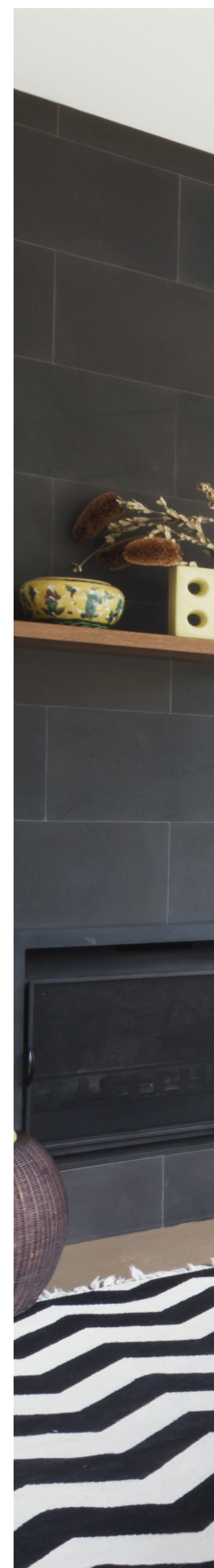
Handheld Remote Control
Included
RMT-AC-UNIVERSAL



ENERGY INFORMATION at High Speed

Airflow 1,580 Cubic Feet Per Minute	Electricity Use 28.5 Watts (Excludes Lights)	Airflow Efficiency 55 Cubic Feet Per Minute Per Watt
--	---	---

Compare: 36" to 48" ceiling fans have airflow efficiencies ranging from approximately 7.1 to 8.6 cubic feet per minute per watt at high speed.





LEVANTRA



FAN D'LIERS™



FAN NUMBER	34-327-FD-11
MOTOR FINISH	Polished Chrome
FAN LIGHT	Integrated
SHADE	White Fabric
DOWNROD FINISH	CH

- 34"W x 40-1/2"H
- Motor Size 104 x 114
- 20° Blade Pitch
- 18" Downrod Included
- Additional Downrod Lengths Sold Separately

- Not Hugger Kit Adaptable
- 8C 4W LED Dimmable Bulbs Included
- 300 Lumens (per bulb), 3000K, 90 CRI
- Handheld RMT-AC-Universal Remote with E Receiver Included



Handheld Remote Control
Included
RMT-AC-UNIVERSAL



ENERGY INFORMATION at High Speed

Airflow 2,394 Cubic Feet Per Minute	Electricity Use 38.5 Watts (Excludes Lights)	Airflow Efficiency 62 Cubic Feet Per Minute Per Watt
--	---	---

Compare: 36" to 48" ceiling fans have airflow efficiencies ranging from approximately 71 to 86 cubic feet per minute per watt at high speed.





INDEX

30-FD-126-322	2	26-9472-FD-133... 18
30-FD-126-SN.....	2	35-328-FD-13..... 20
30-FD-126-89.....	2	36-329-FD-21..... 22
39-FD-124-109	4	36-329-FD-SN..... 22
39-FD-124-322	4	32-326-FD-SN..... 24
39-FD-124-89.....	4	34-327-FD-11..... 26
29-FD-122-SN.....	6	
29-FD-122-44.....	6	
29-FD-122-322	6	
30-333-FD-11.....	12	
26-335-FD-272	14	
26-9536-FD-196... 16		



S
A
V
O
Y



H
O
U
S
E



3130 North Berkeley Lake Road NW ♦ Duluth, GA 30096
800 801 1621 TEL 404 890 7540 ♦ FAX 877 547 2869
SavoyHouse.com

F26